



WATCH  
**MONIKA AND  
KAMUNO'S STORY**  
AT [PLANTWITHPURPOSE.ORG/KAKUMBA](http://PLANTWITHPURPOSE.ORG/KAKUMBA)



# ANNUAL REPORT

## FISCAL YEAR 2017

ENVIRONMENTAL SOLUTIONS TO HUMANITARIAN PROBLEMS



# PLANTING FOR TOMORROW

## THE REALITY

Four of every five people living in poverty around the world are rural. These families rely on the land for their primary source of food and income. They are the first to feel the impact of environmental changes, like erratic rain patterns or loss of soil fertility. The combination of environmental degradation with harsh poverty is brutal, but hope is stronger.

## THE RESPONSE

For over 30 years, Plant With Purpose has sought to address the root causes of rural poverty. Local Plant With Purpose teams are working hand in hand with farming families around the world to innovate, test, and then scale up sustainable solutions. Through constant learning, we have become more efficient and effective year after year.

## THE PLANT WITH PURPOSE MISSION

**Plant With Purpose, a Christian nonprofit organization, reverses deforestation and poverty around the world by transforming the lives of the rural poor.**

### IMPACT



The average Plant With Purpose family has cut their level of poverty in half. Entire watersheds are undergoing restoration, and families are gaining hope as they grow closer to God.

### CORE VALUES

#### EMPOWERMENT

Build capacity and enable strength

#### COLLABORATION

Work together in partnership

#### SUSTAINABILITY

Foster long-term health

#### FAITH

Honor Christ always

#### INNOVATION

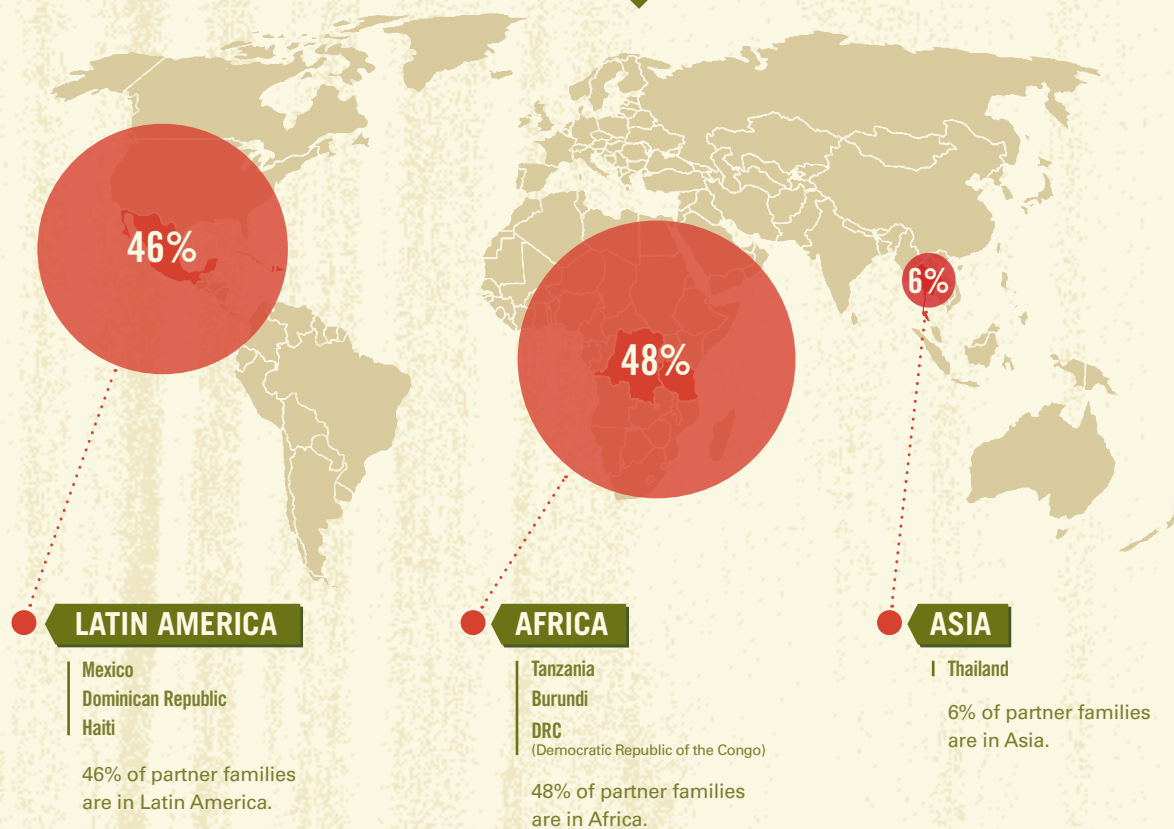
Learn & improve continuously

#### STEWARDSHIP

Maximize resources for good

# WORLDWIDE IMPACT

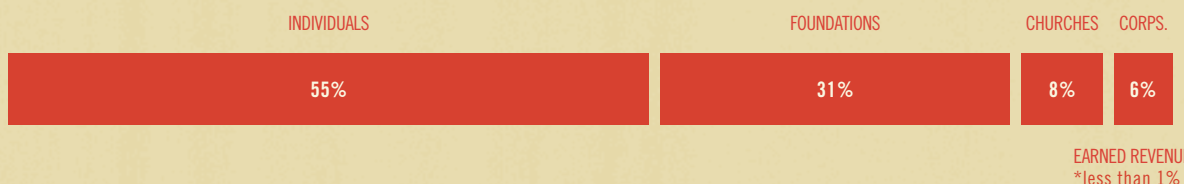
WHERE PLANT WITH PURPOSE IS TAKING ROOT



INTERNATIONAL PROGRAMS  
LATIN AMERICA, AFRICA, ASIA

## RAISING FUNDS TO EQUIP GLOBAL PROGRAMS

Plant With Purpose raised a total of **\$3,822,598** in FY2017. Individual contributions and grants made up the vast majority of that income. These came from individuals, foundations, churches, and corporations and totaled \$3,814,193.



FUNDING SOURCES  
FISCAL YEAR 2017



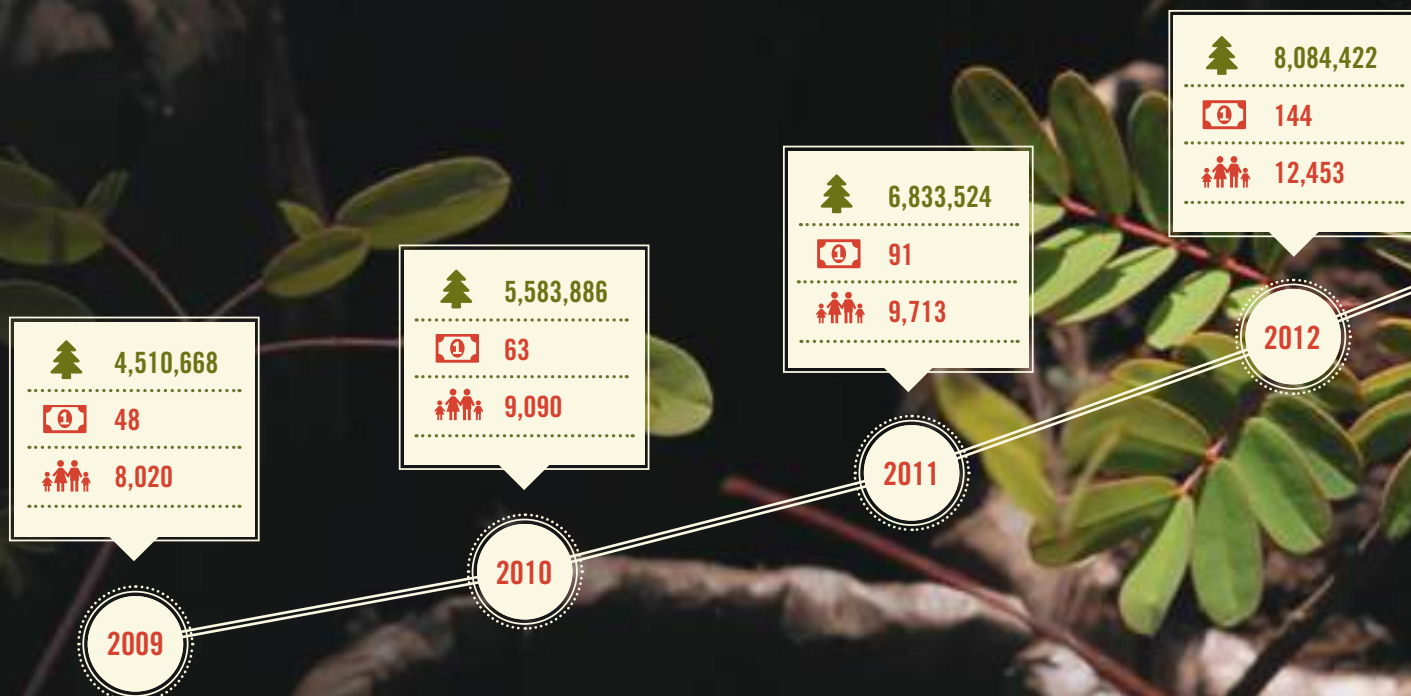
# GLOBAL PROGRAM GROWTH

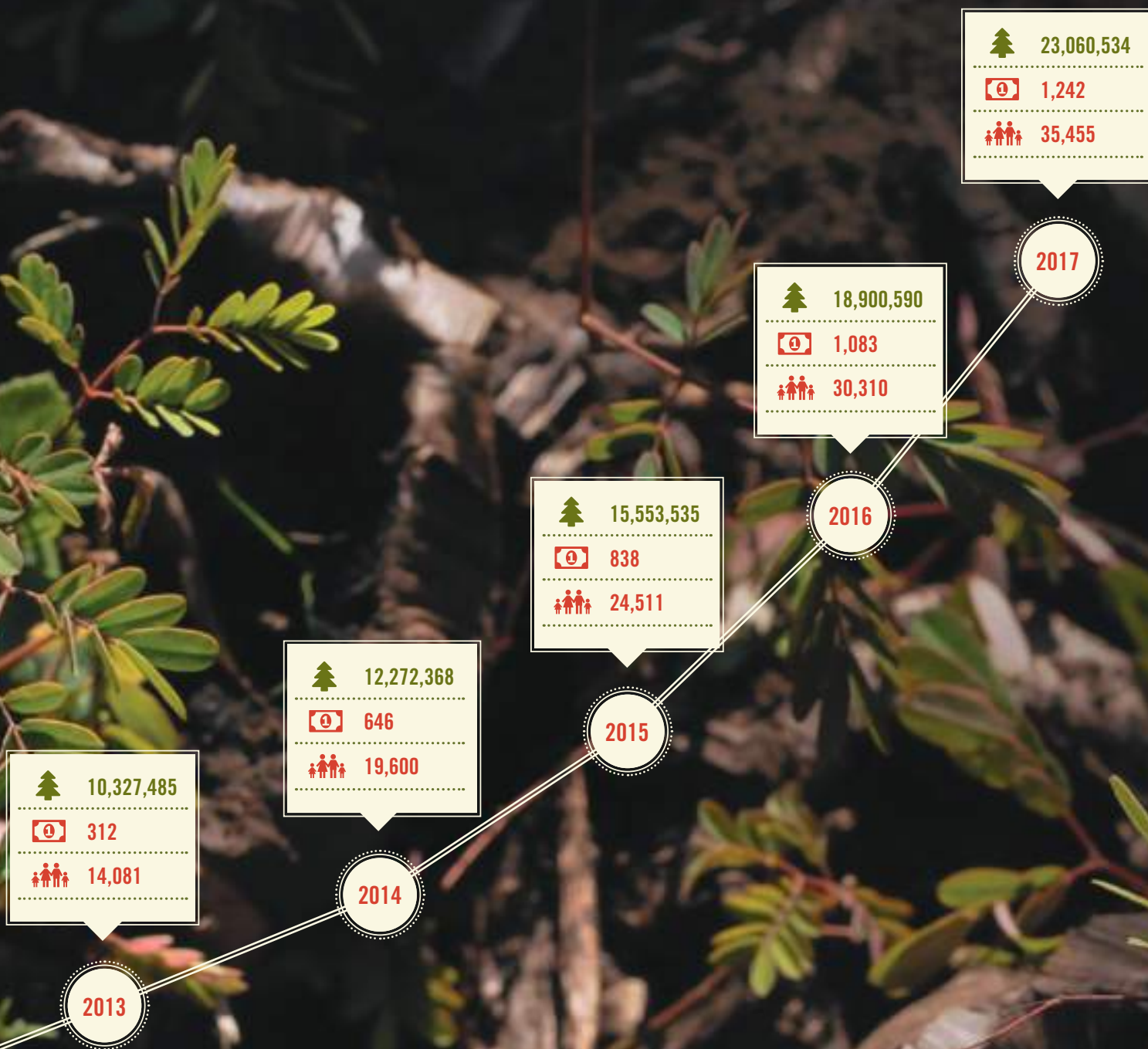
## VISION 2020

Plant With Purpose aims to serve 330,000 individuals across nine countries with an annual budget of \$8 million. At this scale, Plant With Purpose envisions planting 40 million trees and restoring 1.5 million acres of public and private lands by the year 2020. We seek to expand our platform as a leading voice on faith and the environment.

## EFFECTIVE AND INNOVATIVE

Plant With Purpose has 33 years of experience innovating, testing, and learning what works. Each year we become more effective and efficient. Effectiveness is measured through impact evaluations. Efficiency is simply represented by cost per family. At the end of FY2017, the average cost per family was one third what it was in 2010.





## FAMILIES

Around the world, the average Plant With Purpose partner family has cut its level of poverty in half. Some have done even better than that. Through many years of innovation and continual learning, Plant With Purpose has developed a unique mix of agricultural improvement, land restoration, and financial empowerment, rooted in faith.



## TREES

Trees are key to environmental restoration. They offer hope by reversing the vicious cycle of environmental degradation and poverty by anchoring topsoil, increasing organic matter, and helping the soil absorb water. Land that was unproductive is restored to health, which provides families with food and income.



## GROUPS

Sustainable Development Groups are the platform for Plant With Purpose's programs. Each group operates a Village Savings and Loan Association, a safe place for community members to save their hard-earned cash, access loans, and build long-term financial stability. In addition, each group learns the essentials of agroecology, environmental restoration, and creation care.



# PLANT WITH PURPOSE FAMILIES ARE GROWING OUT OF POVERTY

## PLANT WITH PURPOSE FAMILIES CUT THEIR LEVEL OF POVERTY IN HALF.

At Plant With Purpose, we're committed to building a world where all people can thrive. Given that 85 percent of people living in poverty rely on the land as a source of income, environmental degradation leaves rural farming families even more vulnerable. As trees disappear, streams dry up. Topsoil erodes, choking rivers, and contributing to deadly mudslides. Farms that used to thrive produce less each year. It's a vicious cycle that is increasingly common for farming families across the world.

Plant With Purpose has a solution that works. The average family that partners with PlantWith Purpose has cut their level of poverty in half.

And it continues to get better. FY2017 marked the end of a two year pilot project



in the Democratic Republic of the Congo. The results were better than we have ever seen. In just two years, participants cut their level of poverty by 68 percent. The impressive results did not end there. All families living in the pilot project watershed area, including non-participants, saw a poverty reduction of 60 percent in the same time. This growth was a direct result of Plant With Purpose's intervention.

## POVERTY IS MORE THAN JUST A LACK OF MONEY

Poverty impacts quality of life, health, education opportunities, nutrition, stress levels, and so much more. This is why PlantWith Purpose uses a multidimensional measurement of poverty. PlantWith Purpose families cut their level of poverty in half. For some this means they can now, for the first time, count on three meals a day, every day. For others it means they can send their sons and daughters to school. It is the difference between stress and hope.



# HOW IT WORKS

## AN INTEGRATED APPROACH

For more than 30 years, Plant With Purpose has provided solutions to the root causes of rural poverty leading to holistic transformation. Our three-part approach of environmental restoration, economic empowerment, and spiritual renewal heals both lives and land in some of the poorest places in the world.

Sustainable Development Groups are the mechanism for this transformation and engage communities in all aspects of Plant With Purpose's program. Groups consistently meet to save their income and access loans. Training in organic farming further empowers these groups. Reflecting on a Bible passage and pausing to pray integrates spiritual renewal in all that Plant With Purpose does.



Plant With Purpose equips the local church to spread God's love to farming families. We realize that true, lasting hope is found through faith.

Plant With Purpose families are growing in their faith as they invest in a growing relationship with God and their community. Plant With Purpose families report helping a neighbor 20 percent more frequently than comparison groups.

SPIRITUAL  
RENEWAL



As families gain more hope and learn how to improve their farms, they also build a habit of saving and careful financial management. Each Sustainable Development Group consists of a savings group that enables families to build financial security through savings, loans, and financial education.

Families in a Sustainable Development Group are twice as likely to have built up six months cash reserves than comparison groups.

ECONOMIC  
EMPOWERMENT



Agroecology and reforestation are main components of the Plant With Purpose model. Each country program applies a set of carefully selected restoration techniques that help families address their unique challenges in a way that leads to sustainable improvement and increased farm yields.

Reforestation is a key indicator of environmental restoration. Plant With Purpose communities are increasing vegetation levels 6.3 times faster than comparison communities. At the same time, farms increase crop yields by an average of 80 percent.

ENVIRONMENTAL  
RESTORATION



# BURUNDI

Led by Noé Nizigama • Director: Floresta Burundi • Year Founded: 2008



6,773  
PARTNER FAMILIES



867,166  
TREES PLANTED



257  
SUSTAINABLE  
DEVELOPMENT GROUPS



116  
CHURCH  
PARTNERSHIPS

FY2017 brought continued risk and insecurity to Burundi with its history of conflict. However, the Plant With Purpose team and partner farming families are resilient and creative, turning challenges into opportunities. One example is a partnership between Plant With Purpose and the World Food Programme, through which entire communities can earn food by planting trees. The goal is to provide a path for families to become more resilient in the face of ongoing food shortages and widespread undernutrition, meeting daily needs while setting the stage for long-term growth.



## LEONIE'S STORY

CRAFTING PEACE THROUGH  
SUSTAINABLE DEVELOPMENT GROUPS

After years of serving as a combatant, Leonie Karenzo decided to return home. "I had so many unanswered questions in my heart: How would people perceive me? Would they see me as the killer of their children, friends, and relatives?"

**"THEY WELCOMED ME WITH OPEN ARMS"**

In her uncertainty, Leonie wanted to isolate herself, but the members of the local Plant With Purpose Sustainable Development Group reached out anyway. "They wel-

comed me with open arms," she says. "I feel peaceful and reconciled with my neighbors thanks to the group, and that is where I have found my friends."

Leonie grew into a leadership role and led her group to welcome both returned refugees and former combatants. "The group gives us the opportunity to work together as if we all came from the same background." Leonie prays: "May God be praised and glorified and may God bless Plant With Purpose. Amen!"



# DOMINICAN REPUBLIC

Led by Durbel Lora • Director: Floresta Incorporada • Year Founded: 1984

Plant With Purpose celebrates our partnerships with communities in the border region between the Dominican Republic and Haiti. Even though this region has one of the highest poverty rates in the country, many communities have been so transformed that they are ready to graduate from our program. 97 percent of families are engaged in Sustainable Development Groups. These same families have high levels of crop diversity, leading to resilient farms and improved family nutrition. All families in the region incorporate trees on their farms.



## JOSEFA'S STORY

FINDING CONFIDENCE TO GROW

Josefa reluctantly joined Plant With Purpose in 2012. At that time, she didn't really know what she had to contribute. For years, she struggled to provide for a family of five with what she described as unproductive land and a single cow. Luckily for Josefa, her son recognized her potential and encouraged her to join.

"What I like most about the Sustainable Development Group is discipline and order," says Josefa. Plant With Purpose promotes long-term change, not a "quick fix" mentality. After adhering to sustainable

agricultural practices and receiving access to loans through the group, Josefa now has 12 cows and sells milk at the market. She is most excited about her cacao plants, but she has planted a variety of tree crops on her land.

**PLANT WITH PURPOSE PROMOTES  
LONG-TERM CHANGE, NOT A  
"QUICK FIX" MENTALITY.**

"Something that I like is that before starting to save in the group, we pray. Without God there is nothing."



4,858  
PARTNER FAMILIES



944,786  
TREES PLANTED



141  
SUSTAINABLE  
DEVELOPMENT GROUPS



89  
CHURCH  
PARTNERSHIPS





800  
PARTNER FAMILIES



112,000  
TREES PLANTED



21  
SUSTAINABLE  
DEVELOPMENT GROUPS



17  
CHURCH  
PARTNERSHIPS

# DRC

(Democratic Republic of the Congo)

Led by Birori Dieudonne Gaparani • Project Manager: Eben Ezer Ministries Int'l. • Year Founded: 2015

FY2017 marks the end of Plant With Purpose's two year pilot project in the Democratic Republic of the Congo. This pilot project tested an innovation: watershed saturation. We intensively applied the core program model within a well-defined watershed to test the hypothesis that the environmental benefit of Plant With Purpose's program extends beyond participants to the entire watershed. Results of the impact evaluation were better than expected. Direct participants cut poverty by 68 percent in just two years. Their neighbors also benefited as poverty levels were reduced by 60 percent across the entire watershed.



## ALBERT & HABAMUTAKI'S STORY

A NEW WAY TO THINK ABOUT WORK

Albert and Habamutaki and their seven children live in the small town where they were born. It's a tiny village on the side of a steep mountain, a place of immense beauty but very few economic opportunities.

Like their neighbors, Albert and Habamutaki are farmers. Before Plant With Purpose, their farm produced little and they often went hungry. Now they have learned to protect their soil, improve crop yields, and save a little each week. In just two years, the family has produced enough food for two

meals a day and generated enough cash to send two kids to school.

**"NOW WE HOPE THAT THROUGH  
WORK, GOD WILL BE WITH US."**

Habamutaki told us that life really changed when her church began to talk about God and work. She learned that God worked. Work is not a curse, but an important part of how we can serve God. She said, "Before, we only asked God for a miracle. Now we hope that through work, God will be with us."



---

# HAITI

---

Led by Guy Paraison • Director: Floresta Ayiti • Year Founded: 1997

---

Hurricane Matthew was the defining event of FY2017. It hit Haiti hard in an already challenging year with food insecurity at crisis levels. Plant With Purpose immediately jumped into action, launching a cash-for-work program where families earned what they needed to make it through the hard times by building contours and roads, and restoring the land to better weather future storms. Even with this extra work, the team surpassed all performance expectations. Family participation grew by 41 percent and savings groups grew by 26 percent. Most amazingly, equity levels in savings groups rose to \$920,000 USD.

---



## LORDIN JEAN'S STORY

A SKEPTIC BECOMES AN ADVOCATE

Lordin Jean, father of five and community pastor, had little hope for his farm. It barely produced and was not a reliable source of food for his family. When Plant With Purpose first came to his community he was a skeptic. He implemented new techniques but was doubtful that anything would happen.

However, to Lordin Jean's surprise, the anti-erosion barriers he built brought substantial improvement. His farm now produces two and a half times more than before, making it possible to provide for his family. Lordin Jean also took a loan from his

Sustainable Development Group to purchase a pig, which he raised and sold for three times his investment. Today, Lordin Jean is the president

---

**HIS FARM NOW PRODUCES TWO  
AND A HALF TIMES MORE.**

---

of his local Sustainable Development Group and advocate for Plant With Purpose. "As a pastor and preacher, it is a great opportunity for me to continue doing my work, which is spreading the word of God outside the church."



9,369  
PARTNER FAMILIES



330,771  
TREES PLANTED



339  
SUSTAINABLE  
DEVELOPMENT GROUPS



61  
CHURCH  
PARTNERSHIPS





1,991  
PARTNER FAMILIES



41,405  
TREES PLANTED



85  
SUSTAINABLE  
DEVELOPMENT GROUPS



27  
CHURCH  
PARTNERSHIPS

# MEXICO

Led by Luis Alberto Castellanos • Director: Misión Integral • Year Founded: 1996

Plant With Purpose Mexico invested heavily in sustainability and empowerment this year. A big piece of the sustainability strategy is building a network of volunteers who meet quarterly to exchange experiences, and take lessons learned back to their own communities. This volunteer network aids the transition towards local leadership once communities graduate. Simultaneously, it also widens the reach of Plant With Purpose Mexico into places where travel is restricted. Communities are enthusiastic and growing. This past year, the number of Sustainable Development Groups grew from 71 to 85, and member equity in the groups has grown to \$117,669 USD.



## LUCIANO'S STORY

FOLLOWING GOD TO UNEXPECTED PLACES

Luciano is a man who obeys God, even when it seems counterintuitive. For example, when Luciano's five kids were young, he left home looking for work. He dreamed of taking his family away to a place with more opportunity, but that wasn't God's plan. God called him to return home. "Somehow we have to eat. God is faithful."

**"GOD IS FAITHFUL."**

Luciano became a local pastor and farmer. With Plant With Purpose's help, he started planting corn with

homemade compost. His land, once barren, yielded an impressive return, producing extra food that he shared with his church.

Since then, Luciano has grown in his understanding of how to care for his community's land and people. "We recognize that before, it was easier to cut a tree than to grow it. It was easier to destroy than to plant. Now we have learned to take care of what God gave us. We do it out of love for our God."

# THAILAND

Led by Bunsak Thongdi • Director: Upland Holistic Development Project (UHDP) • Year Founded: 2006

This year, our partner in northern Thailand celebrated their 20th year serving the hilltribes of Thailand and neighboring countries. Plant With Purpose's work in Thailand includes restoration of sub-watersheds of the Mae Kohk river, as well as a regional strategy of advocacy through church networks that extend throughout the region. One recent example is when 300 churches from the Karen Baptist Convention in Myanmar attended a holistic development training event. Another is when 43 students of different tribes who graduated from the Payao Bible Seminary were trained in a Church and Community course in partnership with Plant With Purpose.



## MORTE'S STORY

FINDING POTENTIAL IN AN IMPOSSIBLE SITUATION

Morte and his wife are like many ethnic minority families in the northern hills of Thailand. They are often denied basic rights and struggle to survive. Morte explained that all of his income was spent on food and there was nothing left to help improve his situation. He felt stuck.

**THEY CAN BEGIN TO SAVE THEIR SMALL INCOME AND HOPE FOR A BETTER TOMORROW.**

Two years ago, Morte joined Plant With Purpose. Morte's community

had access to land, but it was degraded, didn't produce much, and wasn't technically theirs. Plant With Purpose is helping his community work towards land ownership while improving the quality of that land.

Morte has grown a garden, planted 150 fruit trees around the community, and is doing well. These days Morte and his wife are able to grow enough food to meet their needs, which means that for the first time, they can begin to save their small income and hope for a better tomorrow.



2,116  
PARTNER FAMILIES



264,580  
TREES PLANTED



18  
SUSTAINABLE  
DEVELOPMENT GROUPS



31  
CHURCH  
PARTNERSHIPS





# TANZANIA

Led by Richard Mhina • Director: Floresta Tanzania • Year Founded: 2004



9,548  
PARTNER FAMILIES



1,599,236  
TREES PLANTED



381  
SUSTAINABLE  
DEVELOPMENT GROUPS



194  
CHURCH  
PARTNERSHIPS

Many communities in Tanzania are reaching their 10-year anniversary of partnership, which means many are eligible for graduation for the first time in the history of Plant With Purpose in Africa. To prepare for long-term sustainability and successful graduation, Plant With Purpose Tanzania launched an innovative graduation preparation process. 20 groups were recognized as having successfully completed a program of savings, stewardship, and sustainable agriculture. We expect these graduates to remain engaged and help newer participants along the path to transformation. Plant With Purpose Tanzania continues to lead the way in program innovation so more farming families can be empowered.



## MARY'S STORY

A MOTHER'S JOY

Mary, a mother of seven, lives on the slopes of Mount Kilimanjaro. She remembers the time before Plant With Purpose as a period of great anxiety. "We cut trees without planting any. We cultivated crops without proper farming methods. We did not produce enough to support our families. No matter how much we wanted to be business people, we could not. We lacked capital and did not know where to go when we had a need. To be honest, that was a very hard life."

Today Mary no longer worries. She has a diverse and thriving farm full

of crops and animals, earning enough to meet her needs and give back to her community. One way she gives is through tree planting. Mary has planted over 800 trees by herself.

**MARY'S BIGGEST JOY IS THAT SHE  
HAS BEEN ABLE TO HELP HER  
CHILDREN LAUNCH BUSINESSES.**

Mary's biggest joy is that she has been able to help her children launch businesses. She can help them build a life of their choosing.

# UNITED STATES

Plant With Purpose • Year Founded: 1984

Plant With Purpose USA plays two large roles: advancing continual improvement of programs and leading conversations within the United States on the topics of faith, poverty, and the environment. This year, we hosted a summit in Thailand where agricultural teams from each country program joined together to develop a cohesive global agriculture curriculum and strategies for best applying programs at the watershed level. We also rolled out two new program effectiveness measures that helped to identify how to best innovate and improve.

This year, Plant With Purpose engaged churches, community groups, universities, and other audiences on topics including creation care, loving rural poor communities, and effective community development. We were covered in a variety of news sources including *Sojourners Magazine*, *Nations Magazine*, and the *USA Today Climate Change Special Edition*. We also spoke on topics of faith and environmentalism at colleges, seminaries, and churches across the country.



## CLEAR LAKE PRESBYTERIAN

BRINGING HOME LESSONS FROM HAITI

Clear Lake Presbyterian Church (CLPC) felt increasingly called to move towards a more focused approach to global outreach, desiring to connect in long-term and deep partnerships. This calling led two members to visit Plant With Purpose's program in Fonds-Verrettes, Haiti on an exploratory trip. Four years later, the church is deeply invested in the region and different church members travel each year to meet their partners in Haiti.

When Hurricane Matthew hit Haiti in October 2016, CLPC responded and provided 4,300 days of local, paid work

in Fonds-Verrettes through Plant With Purpose's cash-for-work program. When Hurricane Harvey hit Houston in August 2017, lessons of how to help while affirming the dignity of others hit home. CLPC Outreach Pastor Katrina Pennington said, "It was a great reminder of the importance of approaching people as equals. No one wants to be on the receiving end all the time."

Together, 1,000 members of CLPC, 10 Plant With Purpose Haitian staff in Fonds-Verrettes, and 2,000 Haitian farming families are working towards the restoration of God's world.



19  
STAFF MEMBERS



2,776  
VOLUNTEER  
HOURS SERVED



45  
CHURCH  
PARTNERSHIPS



## ADDITIONAL FINANCIAL INFORMATION



Plant With Purpose strives to uphold the highest standards of financial stewardship. Plant With Purpose maintains GuideStar's highest Platinum rating, was awarded Charity Navigator's highest rating of 4-stars, and meets the rigorous qualifications for accreditation by the Evangelical Council for Financial Accountability. The 2017 Plant With Purpose Independent Auditor's Report has been prepared by RBTK LLP Certified Public Accountants.

The full report can be accessed at [plantwithpurpose.org/financials](http://plantwithpurpose.org/financials).

## ENDORSEMENT



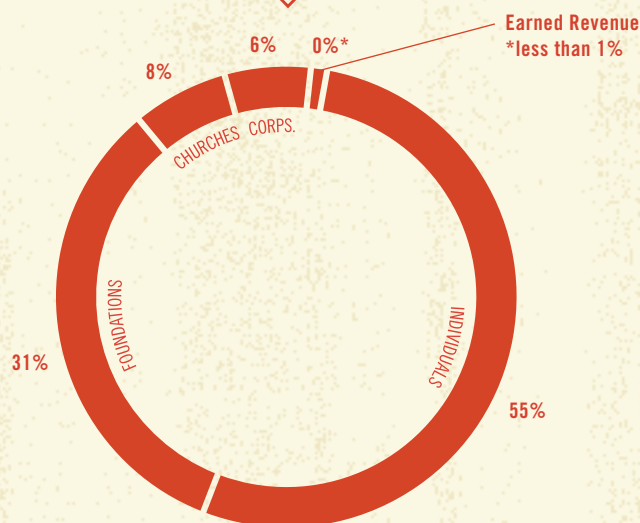
"As a Christian entrepreneur, I really appreciate Plant With Purpose's sustainable solutions. The thing I love the most

about Plant With Purpose is the life changing impact they have on the lives of the rural poor. My family and I pray for and invest financially in Plant With Purpose because we see how our gifts multiply and bring such significant returns environmentally, economically, and spiritually in partnering families around the world. I have investigated many organizations and you will find very few that can match the effectiveness of PlantWith Purpose. I invite you to join our family in investing in the lives of the rural poor."

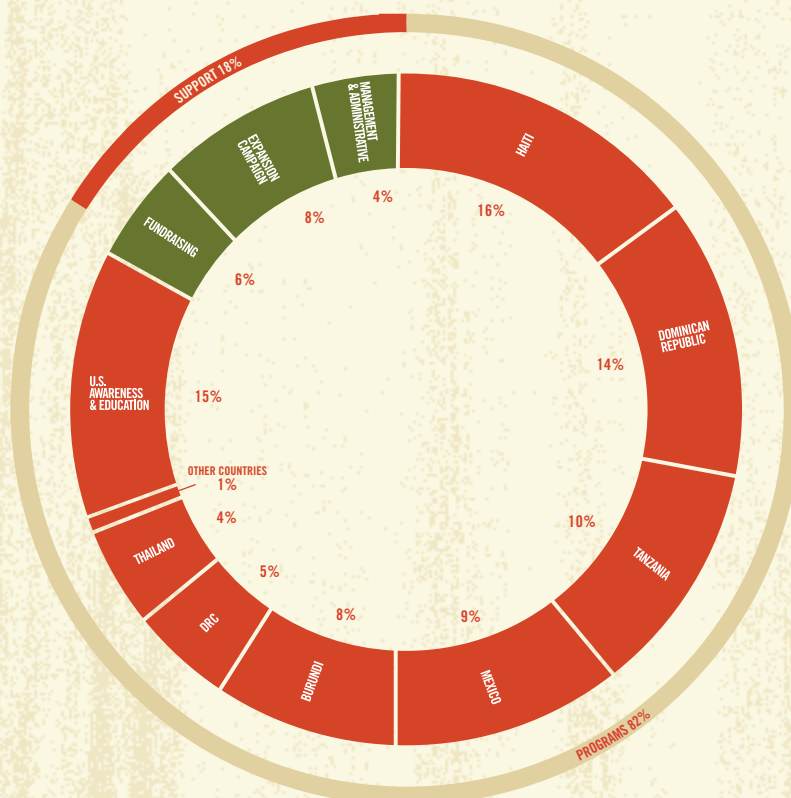
**Dave Clouse**

Donor and Founder of VRBO

## FUNDING SOURCES



## RESOURCE ALLOCATION



**\$.82 of every dollar goes to the program**



# STATEMENT OF ACTIVITIES

2017

2016

	TOTAL	TOTAL
<b>REVENUES AND SUPPORT</b>		
Contributions and Grants	3,814,193	3,524,853
Interest and Dividend Income	1,679	3,499
Net Realized and Unrealized Gain on Investments	6,726	(2,269)
Total Revenues	3,822,598	3,526,083
<b>EXPENSES</b>		
<b>PROGRAM ACTIVITIES</b>		
Haiti	708,956	612,296
Dominican Republic	589,232	543,490
Tanzania	439,959	456,992
Mexico	393,555	430,295
Burundi	365,235	364,131
Thailand	193,053	200,542
DR Congo	187,676	195,309
Other Countries	38,967	740
U.S. Awareness and Education	657,370	564,544
<b>TOTAL PROGRAM ACTIVITIES</b>	<b>3,574,003</b>	<b>3,377,339</b>
<b>SUPPORTING ACTIVITIES</b>		
Fundraising	263,360	223,541
Expansion Campaign*	349,768	318,200
Management and Administrative	195,878	167,790
<b>TOTAL SUPPORTING ACTIVITIES</b>	<b>809,006</b>	<b>709,531</b>
Total Expenses	4,383,009	4,086,870
Net Assets, Beginning of Year	\$917,604	\$1,478,391
Change in Net Assets**	(560,411)	(560,787)
Net Assets, End of Year	\$357,193	\$917,604

\*The Expansion Campaign category combines both fundraising and administrative costs directly funded by our "Plant for Tomorrow" expansion campaign, which is running during fiscal years 2015-2018

\*\*More than 1/3 of all "Plant for Tomorrow" campaign funds were received as income in 2015. The net income deficit results in large part from the planned spending of these funds in 2017 on local and international expansion.



## DEAR PARTNERS,



As I review the accomplishments of this fiscal year, the first thought that comes to my mind is, "We didn't do this."

This annual report speaks to the accomplishments of others. All that was achieved is thanks to

God's grace, protection and provision, and the result of thousands of supporters providing funds, prayer support, and volunteer labor. The results are a reflection of tens of thousands of partner families taking control of their own futures and confidently working for change.

The most important outcome of our work is not trees planted or even reduction in poverty, but rather the families who now say, "We can change our own future and by God's grace we are changing it." The central role of partner families was visible when I joined our Tanzania team and 7,000 Sustainable Development Group members for their annual celebration in January. Enthusiastic about their sense of purpose and calling, they view their role as stewards of creation as a witness to their growing faith.

The communities where we have worked the longest are able to continue the process of change beyond our assistance. This year we began to formally graduate communities, allowing us to share our resources and expertise in new places. However, that does not mean that the relationship is ending. Many of these mature communities serve the new ones as teachers, displaying what is possible.

FY2017 was the final year of the Plant For Tomorrow expansion campaign. The primary goal of the campaign has been to double our impact. In almost every case we exceeded the

goals of the campaign. In fact, nearly half of the 23 million trees that our partner farmers have ever planted were planted in the last three years.

By the end of FY2017 we had added 102,721 new partners for a total of 202,721 partners. We also opened work in 298 villages and added 841 Sustainable Development Groups, each centered around a Village Savings and Loan Association, and involving agricultural training, spiritual renewal opportunities, and environmental stewardship initiatives.

Sustainable Development Groups had a combined equity of \$888,430 at the start of the expansion campaign. In three years that number has more than quadrupled to \$3,609,256. I find myself continually amazed by the fact that this capital was all generated by people who overcame their initial doubts to begin saving as little as twenty-five cents a week.

Starting a new program in Ethiopia is the one campaign goal that we have not yet achieved. We have identified local partners, key watersheds, and designed the basic program. We are currently working through the bureaucracy involved in creating a legal presence and expect to have work on the ground by mid-2018, but this remains an area for prayer.

On the other hand, the new program in the Democratic Republic of the Congo has had an astonishingly successful start with striking improvement in living standards and dramatic stories of reconciliation. Ethnic groups, villages, churches, and even families are coming together around the idea that God has given them purpose. To get a sense for change that is occurring, take a few minutes to watch the video on the home page of our website profiling Monika and Kamuno, the couple on the cover of this report.



There were so many other important program milestones reached in 2017. In January, Durbel Lora Brito was named the new Dominican Republic executive director after a collaborative search, involving both Floresta Incorporada and Plant With Purpose. Also, Floresta Haiti celebrated their 20th anniversary. When I recall our humble beginnings and modest expectations in Haiti, I find it hard to believe that there are now 59,000 people in 157 villages all over the country participating in the program.

FY2018 promises to be very significant as well. We will be conducting comprehensive triennial impact evaluations, which we will use to keep growing and learning how to best serve God's communities. Additionally, now that the one-time funds generated by the Plant For Tomorrow campaign are no longer available, it is incumbent upon us to sustain and grow the work that began during the last three years. Last year I described the interval between the campaign end and when the return on investment is realized as a "trust fall." In FY2018, we discover whether that trust has been well placed.

In the meantime, our trust remains firmly in God, and we look forward to participating in many more stories like Monika and Kamuno's in 2018. Thank you for your partnership.

Sincerely,



**Scott C. Sabin**  
Executive Director

## BOARD OF DIRECTORS

**Rick Burnette**  
**Jeff Busby**  
**Janet Farley**  
**Craig Goodwin**  
**Jeff Kahler**  
**Eric Kaiser**  
**Ted Law**  
**Cathi Lundy**  
**Cindy Outlaw**  
**Scott Sabin**  
**John Steel**  
**Nick Wiik**  
**Denise Yohn**

---

## EXECUTIVE STAFF

**Scott Sabin**  
Executive Director

**Kristen Kreitzer**  
Director of Finance and Administration

**John Mitchell**  
Director of International Programs

**Robert Morikawa**  
Technical Director


**Christi Huizenga Renaud**  
Director of Marketing and Development

**Doug Satre**  
Director of Strategic Partnerships

PLANT WITH PURPOSE







**Not to us, Lord, not to us  
but to your name be the glory,  
because of your love and faithfulness.**

*Psalms 115:1 (NLT)*

**The highest heavens belong to the Lord,  
but the earth he has given to mankind.**

*Psalms 115:16 (NLT)*

**It is we who extol the Lord, both now and forevermore.**

*Psalms 115:18 (NLT)*

**YOUR GIFTS ARE CHANGING LIVES.**

---

PLANTWITH PURPOSE | FORMERLY KNOWN AS FLORESTA USA

4747 Morena Blvd. Suite 100 San Diego, CA 92117

858.274.3718 | [plantwithpurpose.org](http://plantwithpurpose.org)

Plant With Purpose is a 501(c)3 nonprofit, identification no. 33-0052976



Environmental Solutions To Humanitarian Problems

This was printed in an environmentally friendly manner  
using soy-based ink and sustainably sourced paper.  
SFI and FSC certified.