



2024 IMPACT EVALUATION RESULTS

HAITI

PARTICIPANTS: 16,341

PURPOSE GROUPS: 721

TREES PLANTED: 8,029,768

Data as of December 31, 2024

The 2024 Impact Evaluation confirmed that many significant and positive changes are happening through our partnership in Haiti. Land is being restored, families are escaping poverty, and hope is being renewed. In this report, we will provide a more in-depth look at the specific outcomes of our Haiti program.

Holistic Transformation in Haiti

Spiritual renewal, economic empowerment, and environmental restoration are transforming watersheds in Haiti. Results from the 2024 impact evaluation survey and participatory workshops demonstrate the efficacy of this holistic approach. Participants share that Purpose Groups help them put “more investment in the community” through businesses, farming, and animals, and it’s “easier to cover school costs,” making it possible for more children to receive an education.* Ninety-six percent of participants earn income from crops and have 17% healthier soil than the comparison population. As participants increase their income through regenerative farming practices, they can invest in future generations and practice compassion within their communities.

Months of savings

1.8

Participant

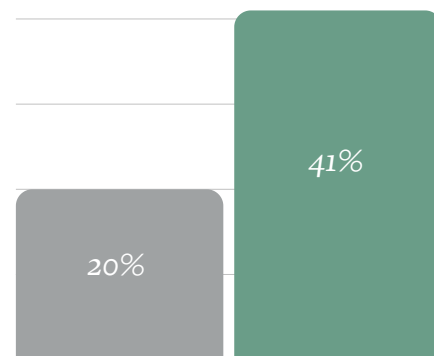
0.7

Comparison

Participants have 1.8 times more savings in reserve than the comparison watershed.

Comparison

Participants



HOUSEHOLDS SENDING GIRLS TO SECONDARY SCHOOL

Participants in Haiti are twice as likely to send girls in their household to secondary school.



**Quotes from Change Matrix workshop, see page 4 for more details*

POVERTY IN HAITI

Poverty is inherently complex and challenging to measure. Plant With Purpose uses a multidimensional poverty index (MPI) to measure poverty holistically. This approach is adapted from the UNDP's MPI formula and customized for a rural farming context. Twelve indicators across six dimensions help us understand the material and environmental factors of rural poverty. In Haiti, participants experienced a 46% reduction in poverty. Participants' level of poverty is cut in half (Figure 1) as they begin saving, making housing improvements, and restoring their physical environment.

Participants demonstrate a particularly dramatic improvement in the financial stability and farming dimensions of MPI. By diversifying income sources and varieties of crops, participants are building resilience to withstand shocks such as political instability, weather events, crop disease, or economic changes. By applying more regenerative farming techniques, participants have 17% healthier soil than the comparison and are 69% less likely to burn their fields to prepare for planting.

Cultivating healthier soil and planting trees are key strategies to increasing water availability, and we see that participants are 56% closer to water than the comparison. While cisterns are built by Plant With Purpose participants and are often on participants' land, water cisterns benefit the whole community. Sharing resources meets the real needs of participants and their neighbors while fostering community cohesion. These positive changes in participants' lives lead to a decrease in poverty as participants are empowered to make positive changes in their communities.

46% reduction in poverty

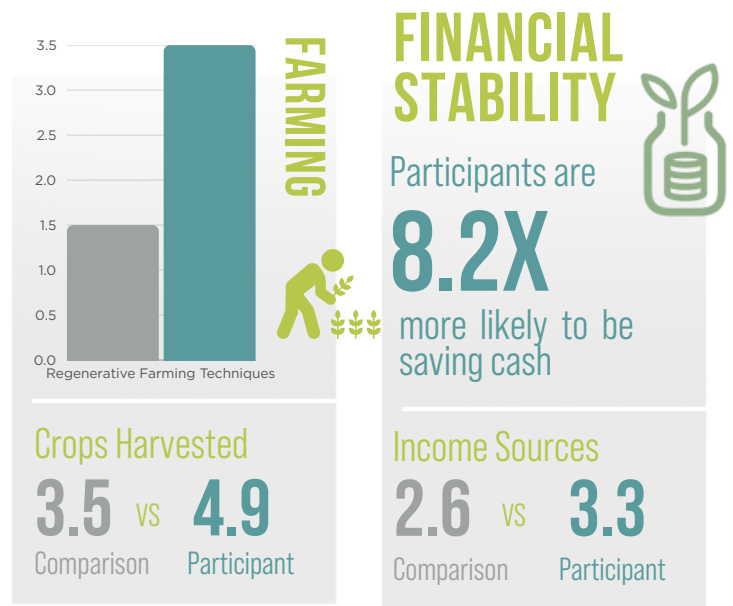
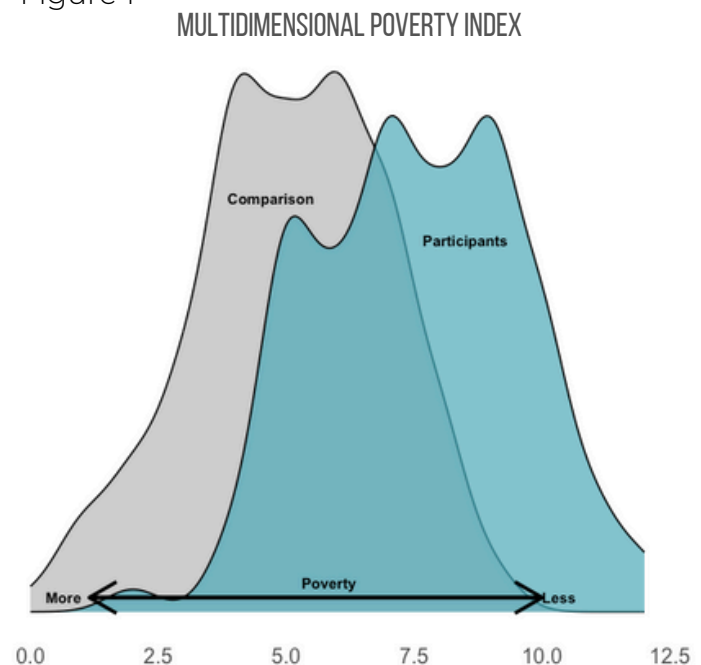


Figure 1



Participants Undeterred by Crisis

The story of Haiti is one of struggle, resilience, and hope amid often dire circumstances. This Caribbean nation has endured a long history of escalating violence, political instability, economic hardship, and the devastating impact of natural disasters. The people of Haiti persist and persevere, though their nation continues to be in crisis. The assassination of President Moïse in 2021 threw the country into chaos, creating a power vacuum that has been leveraged by local gangs, putting the nation in crisis. Our team and the farmers we serve remain resilient, striving for a better quality of life. Participating families are uniting to achieve both personal and communal objectives. In 2024, Plant With Purpose established 145 new purpose groups in Haiti whose participants have 1.8 months of savings in reserve and have planted 81 trees in the last year. We've seen growing generosity, compassion, and hope for the future. Ninety-five percent of participants believe they have the ability to improve their lives, even in this challenging context.



A Haitian family harvests together



Read more about instability in Haiti
on Plant With Purpose's blog:



Times helping a neighbor
in the last month

7

Participant

4

Comparison



BUILDING ROADS, BUILDING FUTURES

In Haiti, critical pieces of infrastructure such as roads are often neglected or ignored. Roads are vital for improving a community's overall well-being, providing access to markets, healthcare, education, and economic opportunities, and offering a reliable connection between communities. While building roads ourselves is outside the scope of Plant With Purpose's work—environmental restoration, economic empowerment, and spiritual renewal—our partnership can equip the community with the ability to organize and build roads themselves.

Eight Purpose Groups in Haiti, in the final phase of their partnership, did the "unthinkable" for their community—through organizing, mobilizing, and gathering their resources, they agreed to cooperatively fund and construct a road that will benefit everyone. Most Purpose Groups in this area of Haiti have 25 members, but these groups decided to set aside extra funds as though they were saving for a 26th member. They agreed to put these funds toward a new road. Through this mechanism, Purpose Groups are able to discuss local challenges, decide how to address them, and collectively save and mobilize toward their goals.

Over the past two years, they saved nearly \$6,000 USD to purchase materials like cement and gravel, and together they are grading and paving the road through a united community effort. Their story testifies to the incredible impact savings groups have for both participants, and their entire community.



Pictured: Purpose Group participants working together on their new road.





HEARING FROM OUR PARTICIPANTS



A Haitian farmer constructs a mechanical barrier to protect the hillside from erosion.

We host participatory workshops which usually involve 15-20 people representing a typical cross-section of participants—farmers, small business people, men, women, youth, elders, and leaders. When a workshop analysis comes directly from communities, it better helps us understand what factors drive the changes in these watersheds. In Haiti, we conducted a mapping workshop, a change matrix workshop, and a spiritual renewal workshop. The workshop analysis coming directly from communities better helps Plant With Purpose understand the driving factors behind changes in these watersheds.

The watershed mapping workshop reveals the challenging circumstances in Haiti. In the mapping workshop, participants attribute increasing deforestation to the rising cost of living (needing to cut trees to earn income) and increased crime. Participants understand the interconnectedness of trees and water sources, attributing decreased water sources to increased deforestation and a prolonged drought.

During the change matrix workshop, participants share how they engage these circumstances with agency and hope. Participants have greater confidence in their savings group and take more initiative as a community. In their Purpose Groups, they practice transparency which decreases risks for their savings. They also collaborate more, highlighting how people learn from each other and solve problems together.

Change	Cause	Effects
<ul style="list-style-type: none"> Economic resilience from Purpose Groups 	<ul style="list-style-type: none"> Training Confidence with finances Greater transparency and less risk 	<ul style="list-style-type: none"> Investment in the community More children going to school

“Plant With Purpose is a partner who is always on our side.”

-Change Matrix participants

SPIRITUAL RENEWAL



Plant With Purpose reflects the love of God to all we serve as we are aware that there are spiritual dimensions to both poverty and environmental degradation. Church partnerships align our work with the existing and enduring spiritual and social fabric of the community, encouraging participants to connect their faith to a growing love for creation and their neighbors.

When we analyze the spiritual transformation of participants, we look at shifting attitudes and behaviors, increased personal agency, improved reconciliation, and higher levels of education for girls as a result of holistic flourishing. For example, 95% of participants in Haiti report greater agency to improve their circumstances and participants report helping a neighbor three times per month.

Testimony of Reconciliation

Through Plant With Purpose's model involving church partnerships, church leaders are empowered to love and serve their communities and promote caring for the environment. This includes training sessions on spiritual renewal, leadership, and theology of work. We see local church leaders as key agents of change and reconciliation in their communities. Here is a story of reconciliation shared from a program watershed in Haiti:

In the watershed, church leaders were concerned about youth leaving their local churches. These leaders reached out to one of the youth and encouraged them to return to church and invested in them by giving them a leadership role. This young person invited their peers to return to church and now many are integrated back in the community. Many have gotten married, had children, and are involved in leadership roles.



INCREASED RESILIENCE AND RECONCILED COMMUNITIES

By saving for the future and practicing regenerative agriculture, families in Haiti are building resilience amid extraordinarily difficult political, economic, and environmental circumstances. Communities are coming together to practice compassion and solve conflicts peacefully. While violence characterizes much of the country, participant farmers practice love for their neighbors.

**"WE RESOLVE OUR CONFLICTS
WELL AND WILL NEVER
RETURN TO DIVISION."**

-Change matrix workshop participants



(c) 2024 Plant With Purpose. All rights reserved.